

2022-2023 ILCA Landscape Design Contest



Design Intent: “Create a compelling, inviting, and safe entrance for this new construction home. Enhance the architecture of the home. Develop a private backyard space, for active play and entertaining.”



2022-2023 ILCA Landscape Design Contest

Sponsors



Chairperson:
Brian Clement, Dept. Chair
Assistant Professor College of DuPage
Horticulture Dept. Business and
Technology Division 425 Fawell Blvd.
Glen Ellyn, Illinois 60137
(630) 942-2526
clement@cod.edu



Objectives:

1. To provide an educational and career development competitive exercise for students interested in Landscape Architecture or Landscape Design.
2. To provide an opportunity for high school and college students to become involved in a horticulture career development activity.
3. To further stimulate interest in landscape architecture, landscape maintenance and construction landscape design, nursery production and the overall "green industry."

Divisions

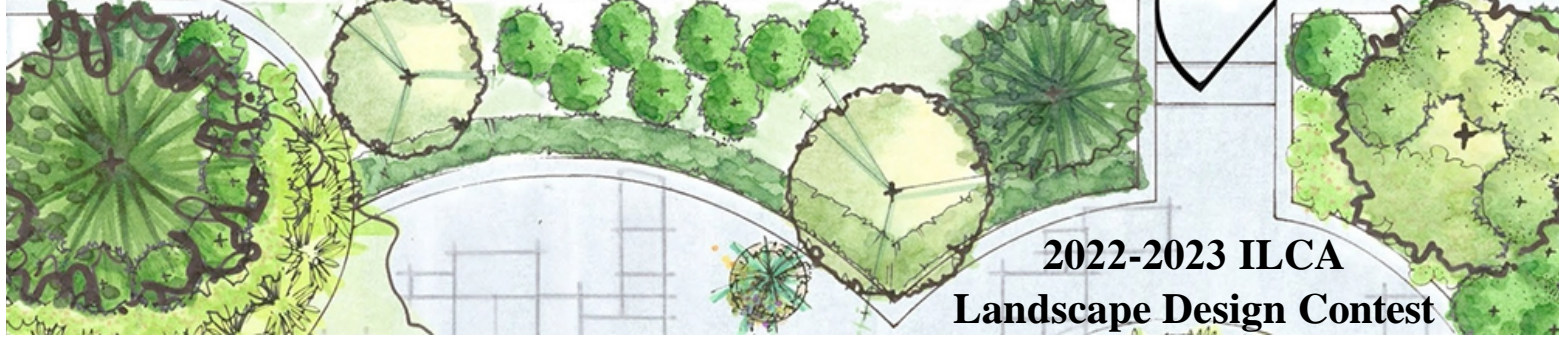
1. There are two academic divisions:
 - a. High School
 - b. Community College/University
2. There shall be three design divisions this year:
 - a. Hand-drawn Landscape Plan
 - b. CAD Landscape Plan
 - c. 3 Dimensional Landscape Design Computer Generated Presentation/Movie
(Must include 1 electronic copy of a Landscape Plan with 3D presentation/movie uploaded to youtube and provide link)

Registration:

3. **There is NO Registration fee this year for each participating school.**
4. Registration must be postmarked by **November 4, 2022** and sent to Brian Clement, College of DuPage Horticulture Department 425 Fawell Blvd. Glen Ellyn, Illinois 60137.

Design Specifications:

1. One (1) scanned digital pdf copy of landscape plan to submit only.
2. You are allowed 1 sheet of 24"x36" paper. The sheet should contain your labeled design, your plant schedule, any notes, 2 dimensional details, etc. The design can be colored-rendered if you choose.
3. Size of paper should be 24"x36". Scale 1"= 8'
4. 3Dimensional Computer Generated Presentation/movie must be submitted digitally with a scanned digital pdf copy of the landscape plan on 24"x26" paper. 3Dimensional software to create this presentation includes, but is not limited to Unilock Uvision 3D Software, DynaSCAPE Sketch 3D with Sketch UP, VectorWorks etc. Save video as a youtube file and submit url.



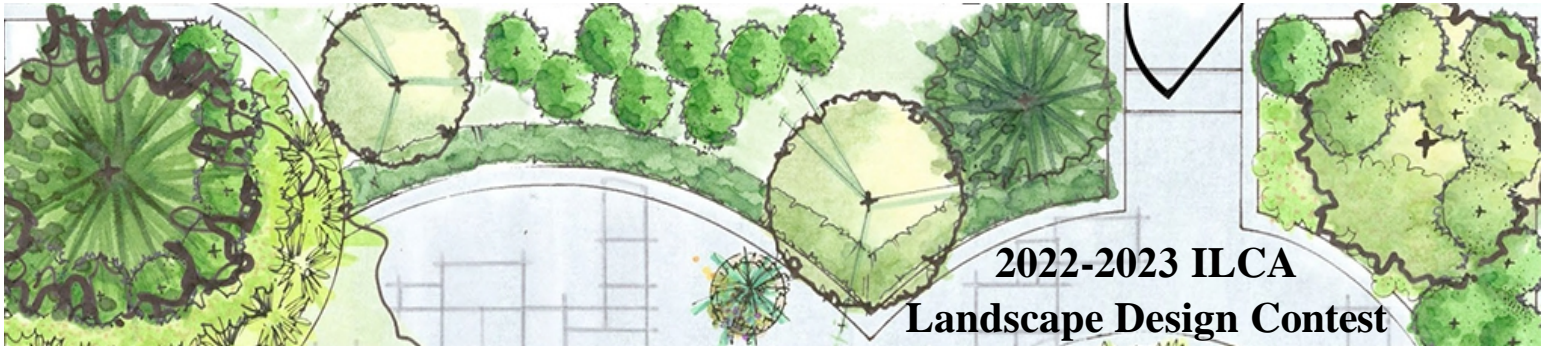
**2022-2023 ILCA
Landscape Design Contest**

Rules and Regulations

1. Number of Entries per School:
 - a. Schools are allowed three entries per Design Division.
 - b. It is the instructor's responsibility to select the school's entries.
 - c. Each entry must be the work of an individual student. Team or group work is not allowed.
2. Materials Provided:
 - a. Schools will be provided with the contest materials. The materials may include pictures, family needs, grading survey, video clips, contest registration, rules and regulations, and a power-point presentation.
 - b. Only registered schools will be allowed to compete.
3. Drawing to be submitted:
 - a. Original hand-drawn designs will not be accepted. Blue line or black line copies will only be accepted as official contest entries. Entries can be submitted electronically.
 - b. Size of paper: 24"x36" only (only 1 page accepted for contest)
 - c. Scale: 1"=8'
 - d. The plant list, any accompanying notes, and any 2 dimensional details must be displayed alongside the plan on the same page. The design can be color rendered if you choose.
 - e. The title box must include the name of the student, school, scale, division (hand-drawn or CAD).
 - f. 3D computer presentations must include 1 electronic copy of the landscape plan on 24"x36" paper.
4. Number of Blueprints:
 - a. Each participating school must submit 1 copy of each entry for the Judges for evaluation purposes.
5. Hardiness Zone:
 - a. The designer is limited to use of plants with a hardiness zones of 3, 4, or 5.
6. Cost of Materials:
 - a. Plant and material costs are not applicable. They will not be considered in evaluations.
7. Contest Fees:
 - a. Schools must register to be able to compete and receive a dropbox link with the contest materials in it. **There is no registration fee this year.**
 - b. Registration form and payment is **due no later than November 4, 2022.**
8. Point Deductions:
 - a. 5 points per infraction will be deducted for not following the rules and regulations before scoring.
9. Due Dates: **All entries are due by Wednesday December 21, 2022.**

Designs will be on display and awards given during the ILCA "Excellence in Landscape" Awards Program held in conjunction with the iLandscape Show February 2023 to be held in Schaumburg, IL. Reception 5:00 pm, program 7:15 pm)

Due Date of all Materials: Plans and/or 3D Presentations are due to Brian Clement by **Wednesday, December 21, 2022.** You must submit the 1 copy of each entry in digital format. Do not send originals. Submit electronic copies to Brian Clement clement@cod.edu. Make sure you receive a conformation email from me.



**2022-2023 ILCA
Landscape Design Contest**

Evaluation

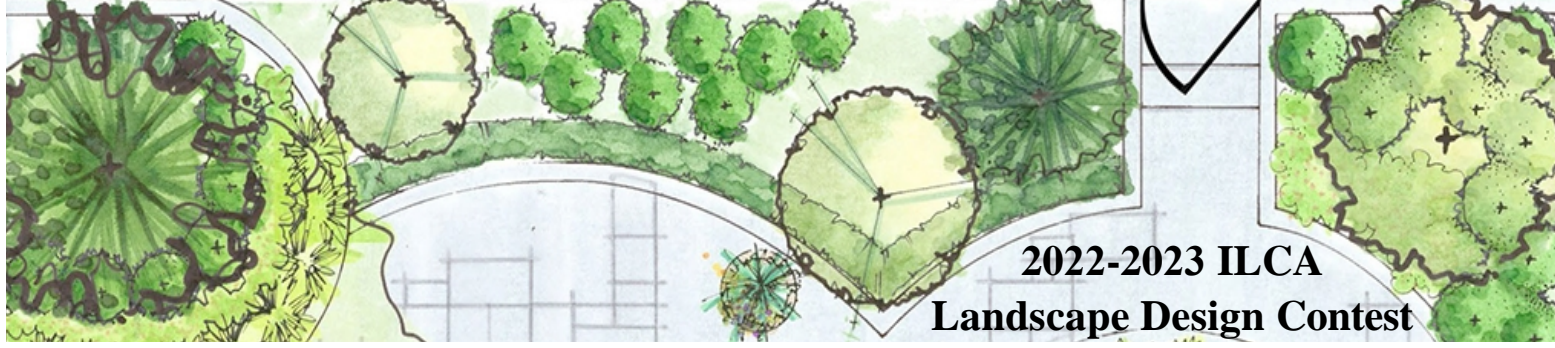
11. Entries will be individually evaluated by an independent judge(s) selected by the contest sponsors and contest chairperson. Evaluators will be professional architects/designers or advanced landscape architect/design students not related to any contest entry designer. Evaluators will not be allowed to view the name of school or designer on the entries. ILCA membership will be asked to provide judges for the contest entries.
12. Rubrics that will accompany the contest rules will be used for evaluation and will be returned with the entries to the participating schools at the end of the contest. Judges will be asked to provide specific comments on the evaluation form as a means for substantiating their ratings and to provide a positive learning experience.
13. Individual scores will be tabulated for each entry in each division and ranked high score to low score.
14. **Tie scores** will be divided by: 1st Function, 2nd Family needs, 3rd Plant Selection, 4th by Presentation. If all scores are identical, then a tie placing will be given with identical plaques if occurring in the top 5 placings.
15. Entries in each division will be grouped into three equal categories with ratings of A, B, and C. Recognitions will be provided for each category entry.
16. The top five high school and the top five college entries in each division will be presented awards. The top five students in each school and design division will also be presented awards. The awards to be presented will be at the discretion of the contest sponsors and chairperson. **New 2022-2023... A cash prize will be given to top entry in each division.**
17. **We will try to announce the top five winners in each category a week before the awards banquet so students can plan accordingly.** If a winning student/school is **not present at the awards**, it is **their responsibility** to pick up the awards at a later date from College of DuPage or pay for postage to have the awards mailed.
18. Winners will be announced at the ILCA "Excellence in Landscape" Awards Program at the iLandscape Show February 2023 (Reception 5:00 p.m., Dinner 6:00 p.m., Awards Program 7:00 p.m.)



2023

The Renaissance Schaumburg Convention Center and Hotel
Schaumburg, IL

<http://ilandscapeshow.com/>



**2022-2023 ILCA
Landscape Design Contest**

Registration Form (fillable PDF)

Name of School: _____

Address: _____

City: _____ State: _____ Zip: _____

Instructor: _____

Email: _____

Phone Number: _____

Academic Division: High School _____
College/University Division _____

*Please complete all the information as requested above. In order to receive all up to date information, your email address is extremely important. **(Please Print Clearly)***

Payment Due: No Fee this year.
Registration Form Due date: November 4, 2022

Please email completed form to Brian Clement

Registration forms must be postmarked by the due date and sent to:

Brian Clement, Dept. Chair, Assistant Professor
College of DuPage Horticulture Department
Business and Technology Division
425 Fawell Blvd.
Glen Ellyn, Illinois 60137
Questions can be directed to clement@cod.edu or phone (630) 942-2526

****** Upon receiving the completed form you will be sent an email with a link to contest materials including pictures, site plan, family needs and some samples of previous year(s) designs in each category.**

Note: No CDs with materials will be sent out. Everything will be electronic including submissions.